

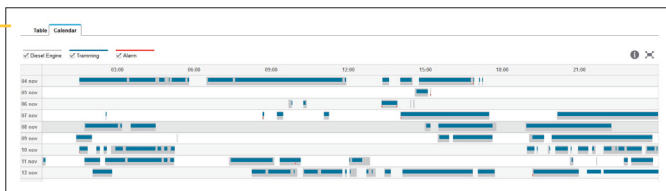
CertiQ on Scooptram ST1030, ST1030LP, ST1530

All available information for the specified machine types



Operation

Loading
Dump/Load point*
Material*
Utilization
Utilization hours (machine off/idle/working)
Utilization %
Engine hours
Transmission hours
Delay/status code*
Operator ID*
Fuel consumption
Total liters
Liter per hour
Total CO ₂ emission
Location
Site position



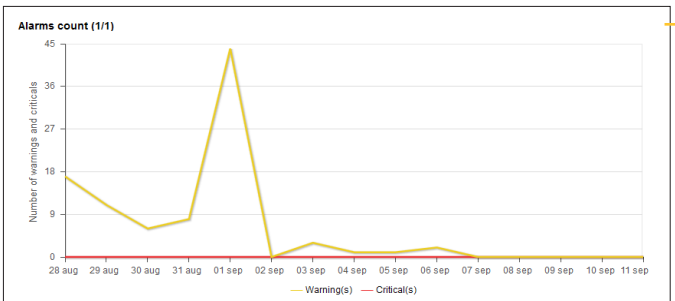
Maintenance

Service
No. of machines in overdue status
No. of reported services
Predicted date for next service
Hours to next service
Diagnostic
Active alarms
No. of alarms
Alarm type trending (engine/hydraulics/others)
Alarm frequency (Count and time for each type)
Acknowledge alarm
Connectivity
Last communication

Service statistics

Service table Service plan log

Service interval	Description	Unit	Predicted date for service	Next service hours ↓	Status	Total engine hours
250h	250h LHD Engine service	Engine	2015-09-19	73	Upcoming	1 677



*Available with CertiQ onboard functionality

Reports

Excel reports

Report subscription

Notification

Mail notification

SMS notification

Administration (admins only)

User settings

Machine settings

Organization settings

Available alarms

Engine oil pressure low critical

Engine overspeed

Engine coolant temp high warning

Latest machine data:	12-03-2015 12:00:00 AM				
Machine model	Machines	Date	Engine hours per day	Transmission hours	Accumulated fuel consumption
ST1030	ST1030 LH 728	2015-11-04	15,96	12,77	72 488,3
ST1030	ST1030 LH 728	2015-11-05	17,67	13,73	72 922,9
ST1030	ST1030 LH 728	2015-11-06	14,56	10,77	73 394,9
ST1030	ST1030 LH 728	2015-11-07	13,75	11,79	73 764,2
ST1030	ST1030 LH 728	2015-11-08	15,27	12,75	74 159,5

(Some variations of supported alarms may exist due to model year and engine alternative)

Epiroc Rock Drills AB

SE-701 91 Örebro, Sweden

Phone no: +46 (0)10 7550 000

Org no: 556077-9018

epiroc.com

