

# CertiQ on Boomer S2

All available information for the specified machine types



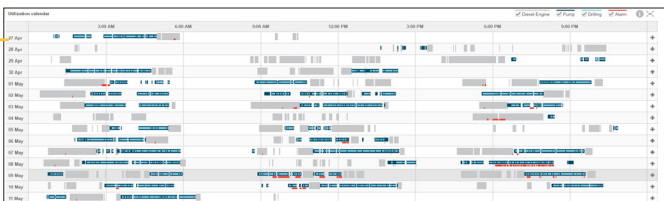
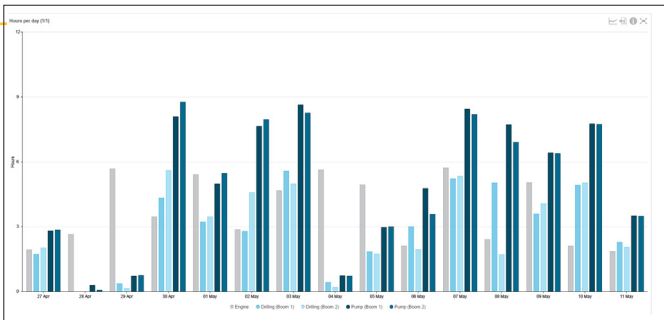
## Operation

### Drilling

- Total drill meters
- Drill meters per drill hour
- Drilled meters per engine hour

### Utilization

- Utilization hours (machine off/idle/working)
- Utilization %
- Engine hours
- Drill hours
- Pump hours
- Location
- Site position



## Maintenance

### Service

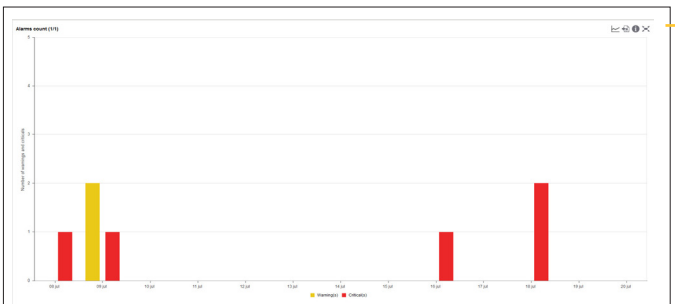
- No. of machines in overdue status
- No. of reported services
- Predicted date for next service
- Hours to next service

### Diagnostic

- Active alarms
- No. of alarms
- Alarm type trending (engine/hydraulics/others)
- Alarm frequency (Count and time for each type)

- Acknowledge alarm
- Connectivity
- Last communication

Service Interval	Description	Unit	Predicted date for service	Next service hours	Status	Total engine hours	Total pump hours
50h	50h TME Impact ser...	Drill unit 2	2015-11-18	23	Upcoming	0	12.771
125h	125h LHD Engine ser...	Engine	N/A	0	Upcoming	0	12.771
500h	500h TME Impact ser...	Drill unit 1	2015-12-17	58	Upcoming	0	12.771



## Reports

Excel reports

Report subscription

Notification

Mail notification

SMS notification

## Administration (admins only)

User settings

Machine settings

Organization settings

## Available alarms

Engine oil pressure low critical

Engine coolant temp high critical

Hydraulic oil temp high critical

Hydraulic oil level low critical

Hydraulic oil filter clogged warning

Hydraulic oil fluid moist alarm

Compressor high stage temp high warning

Machine model	Date	Drill meters	Drill speed	Engine hours per day	Drill hours per day
Boomer M2 C	2017-04-27	240,15	64,22	1,94	3,74
Boomer M2 C	2017-04-28	0,00	0,00	2,65	0,00
Boomer M2 C	2017-04-29	36,62	73,60	5,68	0,50
Boomer M2 C	2017-04-30	326,24	32,88	3,46	9,92
Boomer M2 C	2017-05-01	410,74	61,53	5,41	6,68
Boomer M2 C	2017-05-02	498,70	67,79	2,87	7,36
Boomer M2 C	2017-05-03	734,10	69,59	4,67	10,55
Boomer M2 C	2017-05-04	43,78	70,37	5,63	0,62
Boomer M2 C	2017-05-05	295,86	82,32	4,94	3,59
Boomer M2 C	2017-05-06	400,16	80,70	2,10	4,96
Boomer M2 C	2017-05-07	738,17	69,98	5,72	10,55
Boomer M2 C	2017-05-08	461,13	68,61	2,40	6,72
Boomer M2 C	2017-05-09	594,29	77,90	5,04	7,63
Boomer M2 C	2017-05-10	716,06	72,13	2,11	9,93
Boomer M2 C	2017-05-11	266,85	61,61	1,85	4,33
	<b>15</b>	<b>5 762,85</b>	<b>66,18</b>	<b>56,47</b>	<b>87,07</b>
<b>Total</b>	<b>15</b>	<b>5 762,85</b>	<b>66,18</b>	<b>56,47</b>	<b>87,07</b>

(Some variations of supported alarms may exist due to model year and engine alternative)

### Epiroc Rock Drills AB

SE-701 91 Örebro, Sweden

Phone no: +46 (0)10 7550 000

Org no: 556077-9018

epiroc.com

